




# 300Mbps Wireless N Router

N300 Multi-mode Router

TL-WR840N



 300Mbps  
Wireless Speed

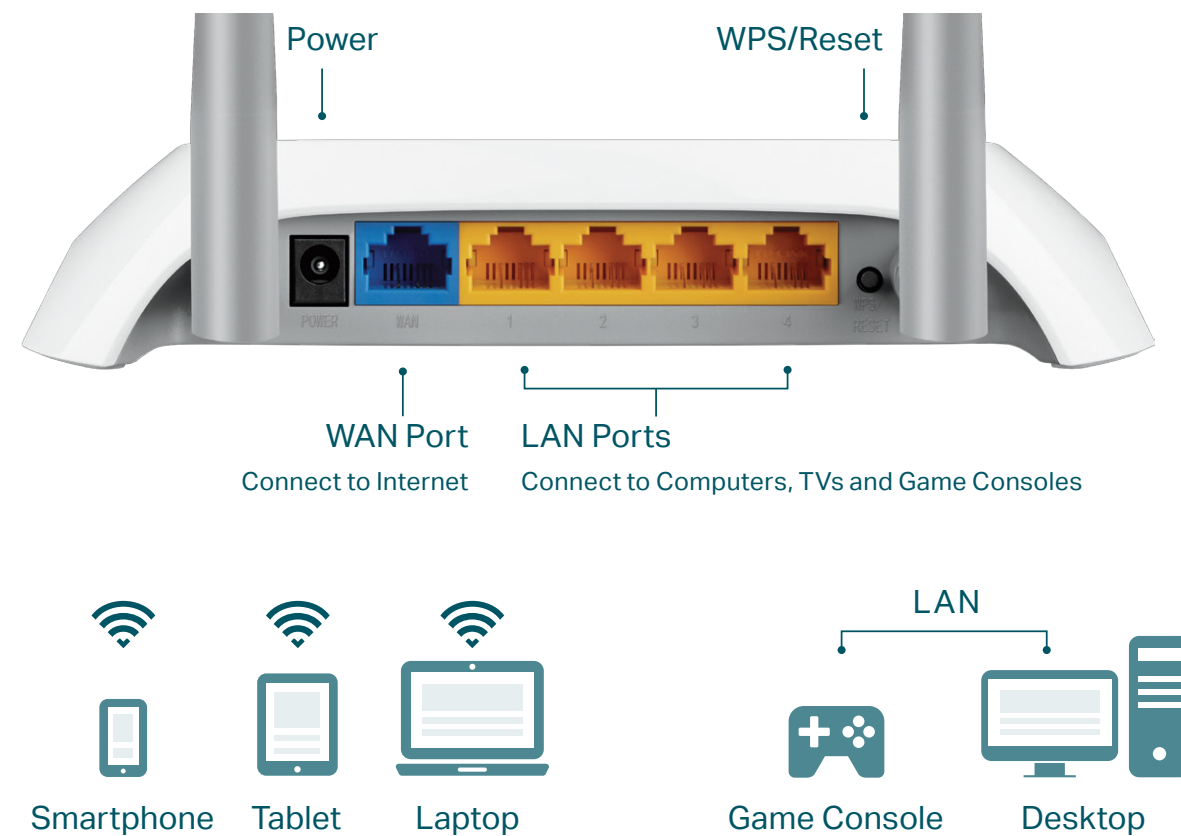
 5dBi Antennas

 IPTV

# Highlights

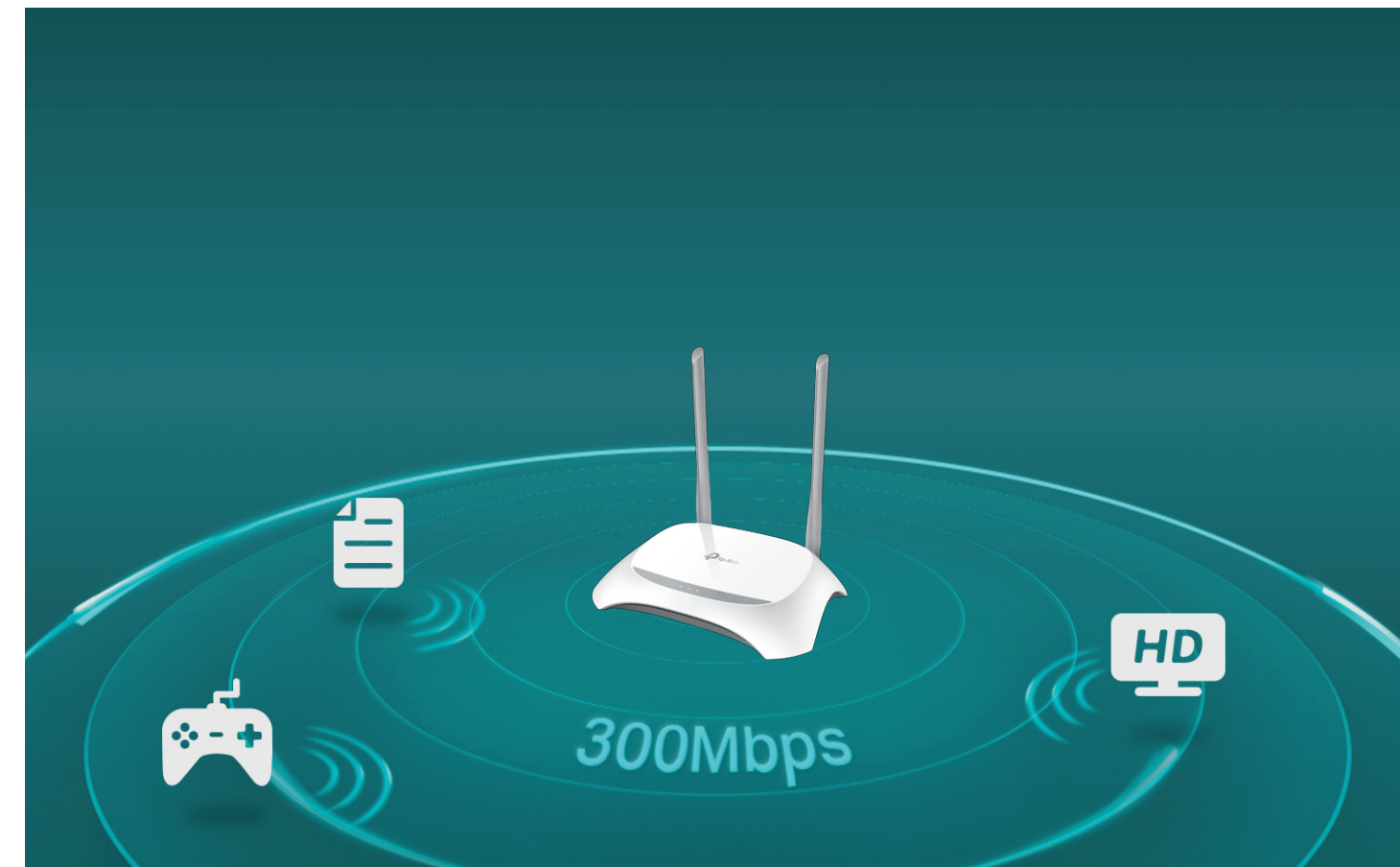
## Reliable Network Connection

Equipped with two 5dBi antennas, TL-WR840N can enhance wireless signal transmission and reception. With the 4 fast Ethernet ports, it provides reliable Wi-Fi and wired connection for medium-sized homes, letting your family enjoy fast Wi-Fi together on every smartphone, tablet and laptop.



## Quick, Everyday Wi-Fi

TL-WR840N is compatible with IEEE802.11b/g/n and provides a high speed solution. Complying with the IEEE802.11n standard, TL-WR840N can deliver a speed up to 300Mbps, meeting your most demanding home networking needs, such as HD streaming, online gaming and large files downloading.

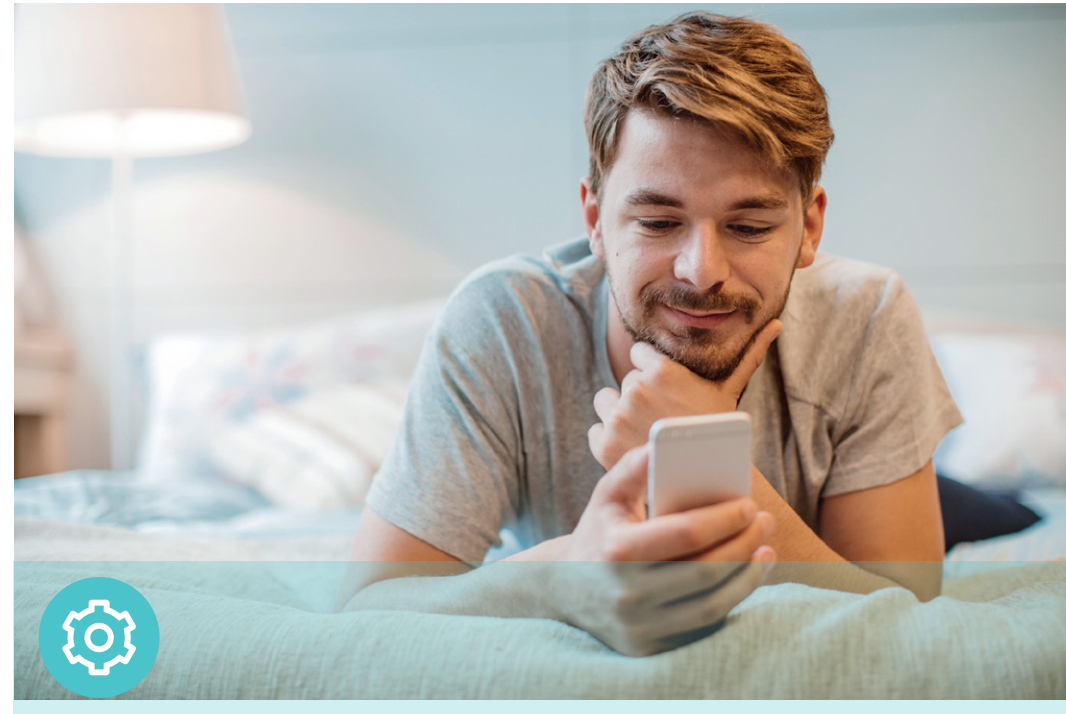


# Features



## Reliability

- **Wireless N Speed** – 300Mbps Wi-Fi speed meets your daily internet needs
- **802.11n** – Backward compatible with 802.11b/g products
- **Easy Bandwidth Management** – Bandwidth Control allocates necessary speed of each connected device to ensure quality of multimedia streaming
- **Access Control** – Establish a whitelist or blacklist to allow or block certain devices from accessing the internet



## Ease of Use

- **Intuitive Web UI**– Ensures quick and simple installation without hassle
- **Fast Encryption** – One-touch wireless security encryption with the WPS button
- **Hassle-free Management with Tether App** – Network management is made easy with the TP-Link Tether App, available on any Android or iOS device
- **Parental Controls** – Manage when and how children devices can access the internet



## Multi-mode

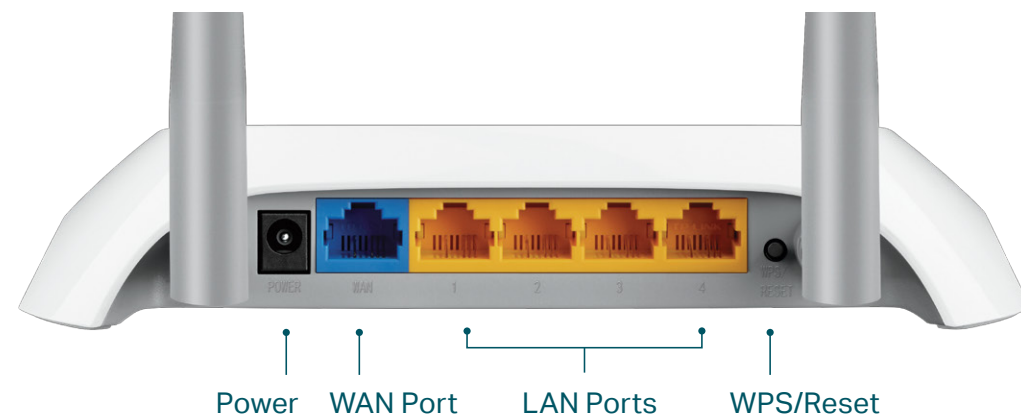
- **Wireless Router Mode** – Create a strong Wi-Fi network and share internet to multiple Wi-Fi devices
- **Access Point Mode** – Transform your existing wired network to a wireless one
- **Range Extender Mode** – Boost the existing wireless coverage in your home
- **WISP Mode** – Connect to the ISP network wirelessly in areas without wired service



# Specifications

## Hardware

- Ethernet Ports: 4 10/100Mbps LAN Ports, 1 10/100Mbps WAN Port
- Buttons: WPS/Reset Button
- Antennas: 2 Fixed Omni Directional Antennas
- External Power Supply: 9VDC / 0.6A
- Dimensions (W x D x H): 7.2 x 5.0 x 1.4 in. (182 x 128 x 35mm)



## Wireless

- Wireless Standards: IEEE 802.11n, IEEE 802.11g, IEEE 802.11b
- Frequency: 2.412~2.472GHz
- Signal Rate:
  - 11n: Up to 300Mbps(dynamic)
  - 11g: Up to 54Mbps(dynamic)
  - 11b: Up to 11Mbps(dynamic)
- Reception Sensitivity:
  - 270M: -70dBm@10% PER
  - 130M: -74dBm@10% PER
  - 108M: -74dBm@10% PER
  - 54M: -77dBm@10% PER
  - 11M: -87dBm@8% PER
  - 6M: -90dBm@10% PER
  - 1M: -98dBm@8% PER
- Wireless Function: Enable/Disable Wireless Radio, WMM, Wireless Statistics
- Wireless Security: WEP, WPA / WPA2, WPA-PSK / WPA2-PSK

# Specifications

## Software

- Working Modes: Wireless Router, Range Extender, Access Point, WISP
- WAN Type: Dynamic IP, Static IP, PPPoE, PPTP(Dual Access), L2TP(Dual Access), Bigpond
- DHCP: Server, DHCP Client List, Address Reservation
- Quality of Service: WMM, Bandwidth Control
- Port Forwarding: Virtual Server, Port Triggering, UPnP, DMZ
- Dynamic DNS: DynDns, Comexe, NO-IP
- Access Control: Parental Controls, Local Management Control, Host list, Access Schedule, Rule Management
- Firewall Security: DoS, SPI Firewall, IP and MAC Address Binding
- Protocols: IPv4, IPv6
- Management: Access Control, Local Management, Remote Management
- Guest Network: 2.4GHz Guest Network

## Others

- Certification  
CE, RoHS
- System Requirements  
Microsoft Windows 10/8.1/8/7/Vista/XP/2000/NT/98SE, MAC OS, NetWare, UNIX or Linux  
Internet Explorer 11, Firefox 12.0, Chrome 20.0, Safari 4.0, or other Java-enabled browser  
Cable or DSL Modem  
Subscription with an internet service provider (for internet access)
- Environment  
Operating Temperature: 0°C~40°C (32°F ~104°F)  
Storage Temperature: -40°C~70°C (-40°F ~158°F)  
Operating Humidity: 10%~90% non-condensing  
Storage Humidity: 5%~90% non-condensing
- Package Contents  
300Mbps Wireless N Router TL-WR840N  
Power Adapter  
RJ-45 Ethernet Cable  
Quick Installation Guide



For more information, please visit

<http://www.tp-link.com/en/products/details/TL-WR840N.html>

or scan the QR code left

Specifications are subject to change without notice. TP-Link is a registered trademark of TP-Link Technologies Co., Ltd. Other brands and product names are trademarks or registered trademarks of their respective holders. Copyright ©2018 TP-Link Technologies Co., Ltd. All rights reserved.

Maximum wireless signal rates are the physical rates derived from IEEE Standard 802.11 specifications. Actual wireless data throughput and wireless coverage are not guaranteed and will vary as a result of 1) environmental factors, including building materials, physical objects, and obstacles, 2) network conditions, including local interference, volume and density of traffic, product location, network complexity, and network overhead, and 3) client limitations, including rated performance, location, connection, quality, and client condition.

[www.tp-link.com](http://www.tp-link.com)

TP-Link 300Mbps Wireless N Router TL-WR840N