





300Mbps Wireless N USB VDSL/ADSL Modem Router



TD-W9970

 VDSL/ADSL/Fiber/Cable
Compatible

 300 Mbps
Wireless Speed

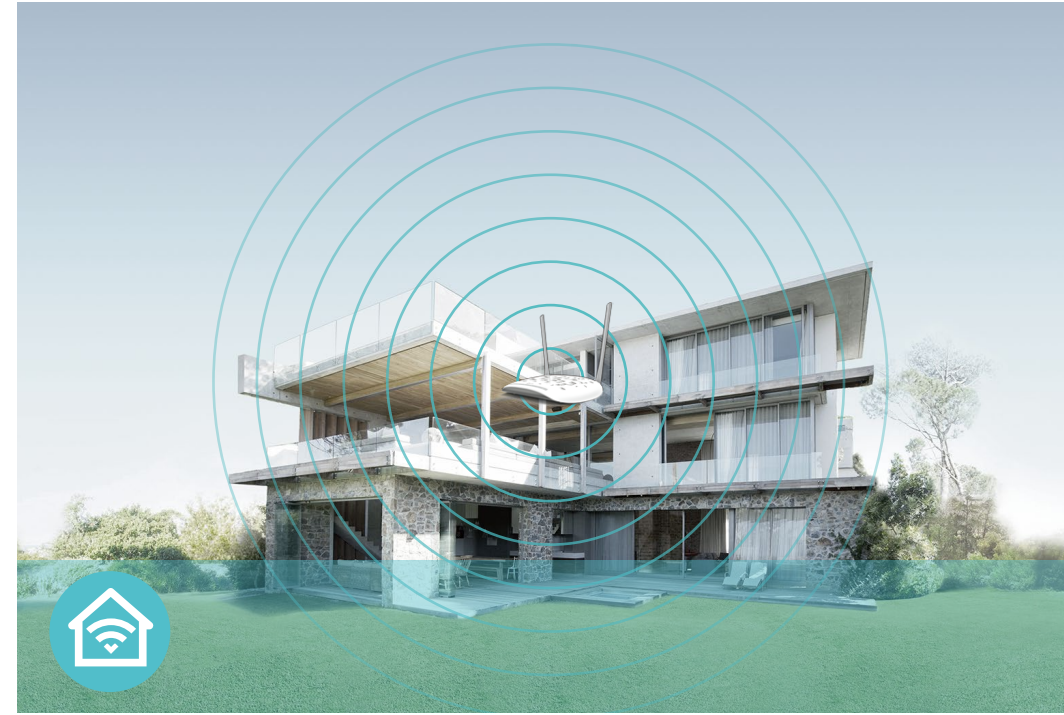
 USB 2.0 Port
for 3G/4G Backup Connection

Features



Speed

- **Ultimate Wireless Speed** – Up to 300 Mbps makes it ideal for heavy bandwidth consuming or interruption sensitive applications like online gaming, Internet calls and even the HD video streaming
- **High Speed VDSL** – VDSL Broadband Access of up to 100 Mbps speeds ensures your home internet needs are met



Wi-Fi Range

- **Expansive Coverage** – 300 Mbps Wi-Fi allows stable speed for wireless activities, such as streaming, surfing, browsing and posting social media
- **High-gain Antennas** – Two 4 dBi high-gain antennas expand network coverage across your home



Reliability

- **Easy Bandwidth Management** – Assigns your preferred devices with more bandwidth

Features



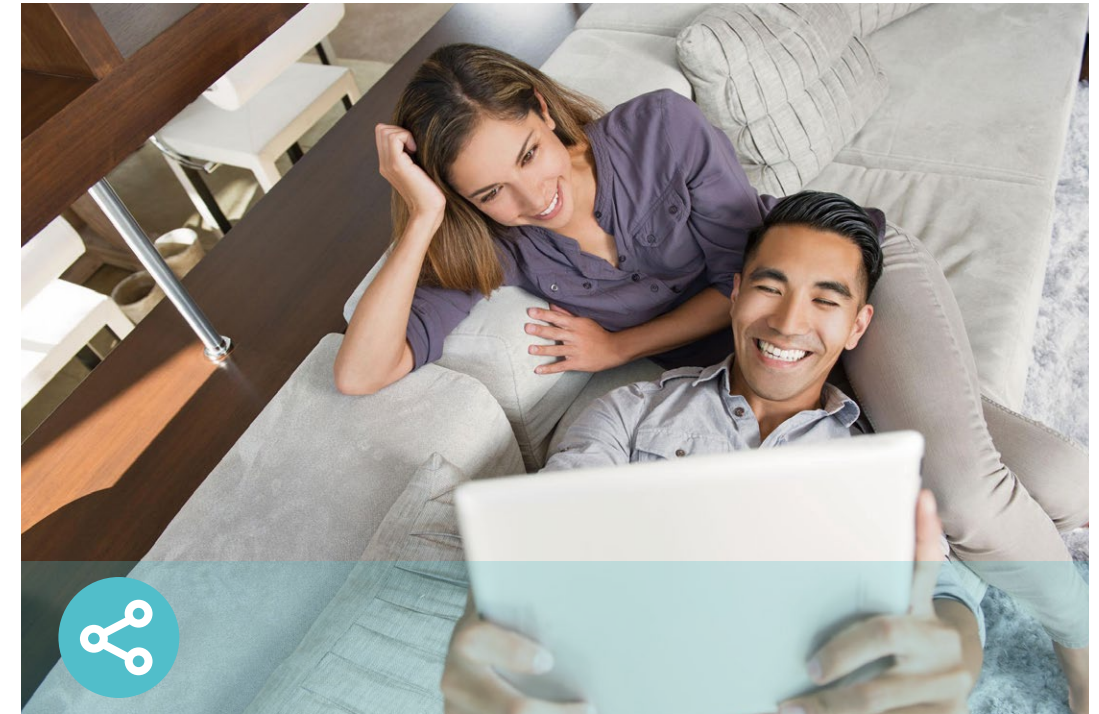
Easy Management

- Intuitive Web UI – Ensures quick and simple installation without hassle
- Hassle-free Management with Tether App – Network management is made easy with the TP-Link Tether App, available on any Android or iOS device
- Remote Management with TP-Link ID – Manage your home network from your smartphone or tablet via a single TP-Link ID, no matter where you find yourself



Security

- Guest Network – Provides separate access for guests while securing the home network
- Parental Controls – Manage responsible internet access for your children
- Encryptions for Secure Network – WPA-PSK/WPA2-PSK encryptions provide active protection against security threats
- VPN Support – Secure access to your home or office network from remote devices
- Firewall – Supports Firewall & Dos Protection , Service Filtering , Access Control , IP & MAC Binding, IPv6 Firewall



Ease of Use

- Wireless Schedule – Wireless Schedule lets you turn the Wi-Fi radio on or off based on a preset timetable
- Fast Encryption – Easily set up an encrypted wireless connection at a push of the WPS button
- Easy Wi-Fi On/Off – Turn On/Off wireless radio using the Wi-Fi button
- Power On/Off – Conveniently power on or off your router as required

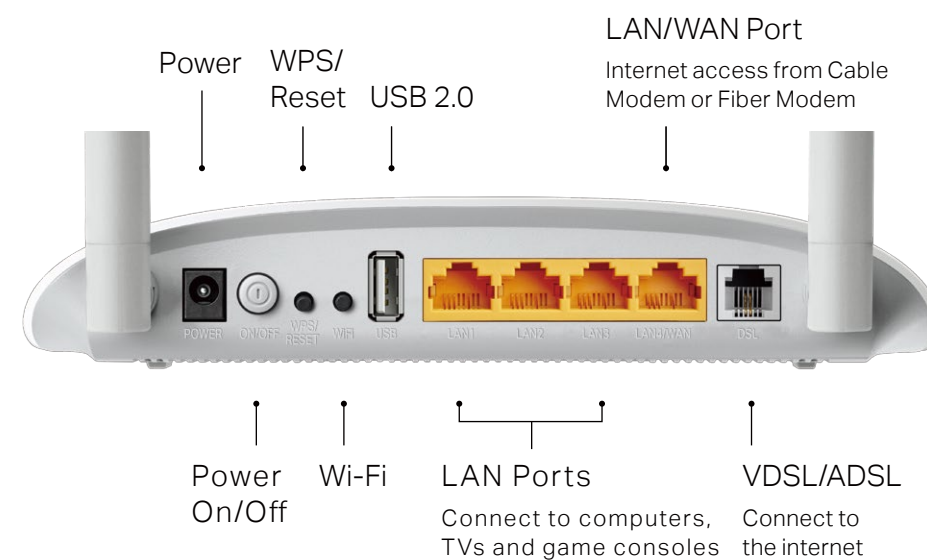
Specifications

Hardware

- Ports: 1 10/100 Mbps LAN/WAN Port, 3 10/100 Mbps LAN ports, 1 RJ11 port, 1 USB 2.0 Port
- Button: WPS/Reset Button, Wi-Fi Button, Power On/Off Button
- Antenna: 2 × 4dBi Fixed Omni-Directional Antennas
- External Power Supply: 9V/0.85A
- Dimensions (W x D x H): 7.7 × 5.1 × 1.4 in. (195 × 130 × 36 mm)
- IEEE Standards: IEEE 802.3, 802.3u
- ADSL Standards: Full-rate ANSI T1.413 Issue 2, ITU-T G.992.1(G.DMT), ITU-T G.994.1 (G.hs), ITU-T G.995.1
- ADSL2 Standards: ITU-T G.992.3 (G.DMT.bis)
- ADSL2+ Standards: ITU-T G.992.5
- VDSL2 Standards: ITU-T G.993.2, ITU-T G.993.5 (G.vector), ITU-T G.998.4 (G.INP)

Wireless

- Wireless Standards: IEEE 802.11b, 802.11g, 802.11n
- Frequency: 2.400 - 2.4835 GHz
- Signal Rate: 300 Mbps at 2.4 GHz
- Transmit Power: <20 dBm(EIRP)
- Wireless Function: Enable/Disable Wireless Radio, WMM, Wireless Statistics
- Wireless Security: Supports 64/128-bit WEP, WPA/WPA2, WPA-PSK/WPA2-PSK encryptions



Specifications

Software

- Operation Modes: DSL Modem Router, 3G/4G Router, Wireless Router
- DHCP: Server, Client, DHCP Client List, Address Reservation, DHCP Relay
- Quality of Service: WMM, Bandwidth Control
- Port Forwarding: Virtual Server, Port Triggering, UPnP, DMZ, Manage Control
- Dynamic DNS: DynDns, NO-IP
- VPN Pass-Through: PPTP, L2TP, IPSec Pass-through
- ATM/PPP Protocols: ATM Forum UNI3.1/4.0, PPP over ATM (RFC 2364), PPP over Ethernet (RFC2516), IPoA (RFC1577/2225), PVC - Up to 8 PVCs
- Security: Firewall & Dos Protection , Service Filtering , Access Control , IP & MAC Binding, IPv6 Firewall
- Management: Remote management, Telnet management, Command Line Interface, SSL for TR-069, SNMP V1/V2C, Web Based Firmware Upgrade,CWMP(TR-069), Diagnostic Tools
- Guest Network: 2.4 GHz Guest Network
- IPSec VPN: Supports up to 10 IPSec VPN tunnels
- Protocols: Supports IPv4 and IPv6

Others

- Certification: CE, RoHS
- System Requirements:
Windows 10/8.1/8/7/Vista/XP or Mac OS or Linux-based operating system
- Environment
Operating Temperature: 0°C~40°C (32°F ~104°F)
Storage Temperature: -40°C~70°C (-40°F ~158°F)
Operating Humidity: 10%~90% non-condensing
Storage Humidity: 5%~90% non-condensing
- Package Contents
DSL Modem Router TD-W9970
External DSL Splitter
RJ11 DSL Cable
RJ45 Ethernet Cable
Quick Installation Guide
Power Adapter



For more information, please visit

<http://www.tp-link.com/en/products/details/?model=TD-W9970>

or scan the QR code left

*Maximum wireless signal rates are the physical rates derived from IEEE Standard 802.11 specifications. Actual wireless data throughput and wireless coverage, and quantity of connected devices are not guaranteed and will vary as a result of network conditions, client limitations, and environmental factors, including building materials, obstacles, volume and density of traffic, and client location.
Specifications are subject to change without notice. TP-Link is a registered trademark of TP-Link Technologies Co., Ltd. Other brands and product names are trademarks or registered trademarks of their respective holders. Copyright ©2020 TP-Link Technologies Co., Ltd. All rights reserved.

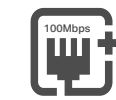
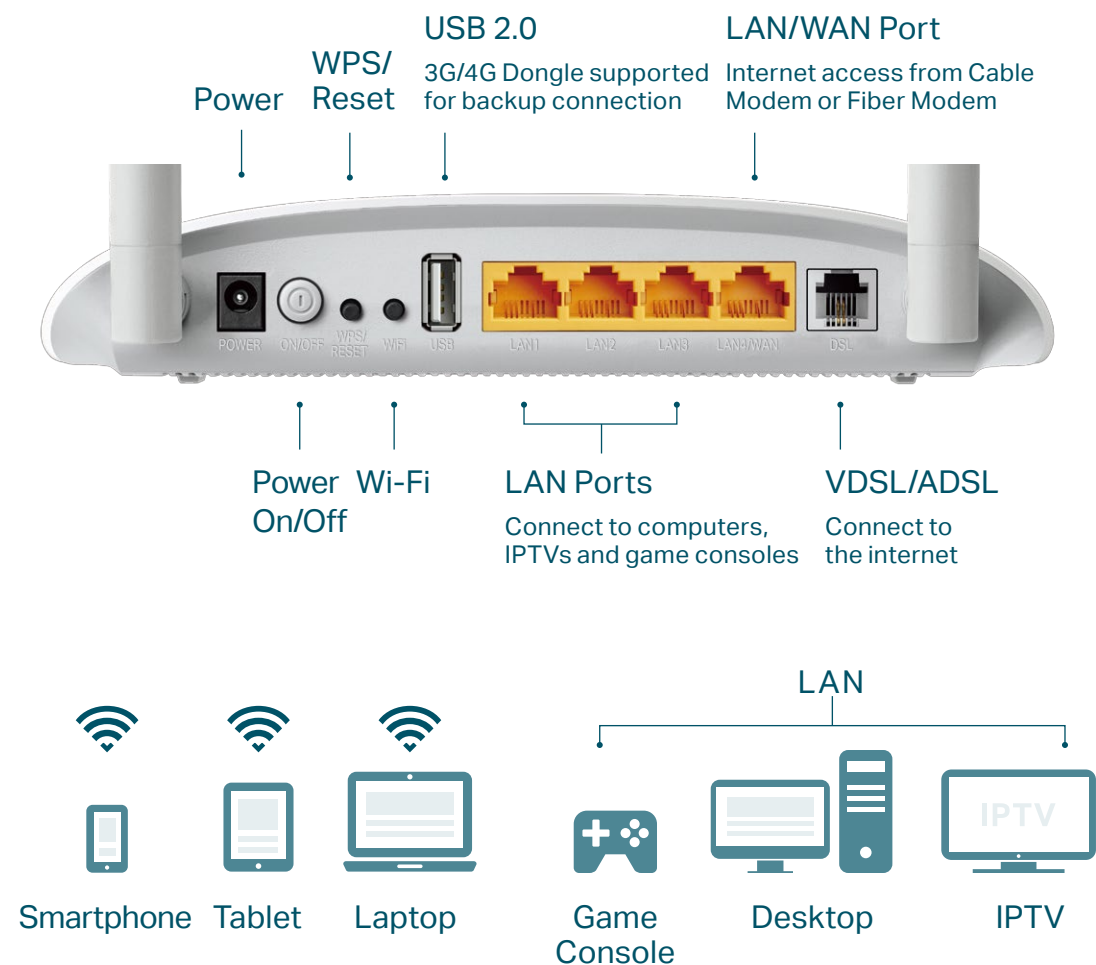
www.tp-link.com

TP-Link 300Mbps Wireless N USB VDSL/ADSL Modem Router TD-W9970

Highlights

Keep Your Home Less Complicated, More Connected

The TD-W9970 is a combined wired/wireless network connection device with an integrated wireless router and VDSL/ADSL modem, reducing the hassle of configuration. For diverse internet access, the LAN/WAN port accepts broadband connections from Cable Modem or Fiber Modem, and a USB 2.0 port shares 3G/4G connections. Featuring a variety of features and rich functionality, the TD-W9970 is the perfect space-saving hub of your home or business network.



High Speed VDSL

- VDSL Broadband Access of up to 100 Mbps speeds ensures your home internet needs are met



Stronger Wi-Fi Across Your Home

- 300 Mbps Wi-Fi allows stable speed for wireless activities, such as streaming, surfing, browsing and posting social media
- Two 4 dBi high-gain antennas expand network coverage across your home



Personalized Security

- Easily set up an encrypted wireless connection at a push of the WPS button
- Parental Controls allow parents to establish regulated access for children



Easy Installation

- An easy setup assistant provides hassle-free installation in seconds
- Integrated mainstream ISP profiles have the most common provider information built into the web UI and Tether. Users simply choose their ISP from a list, enter the username and password, and login is complete.